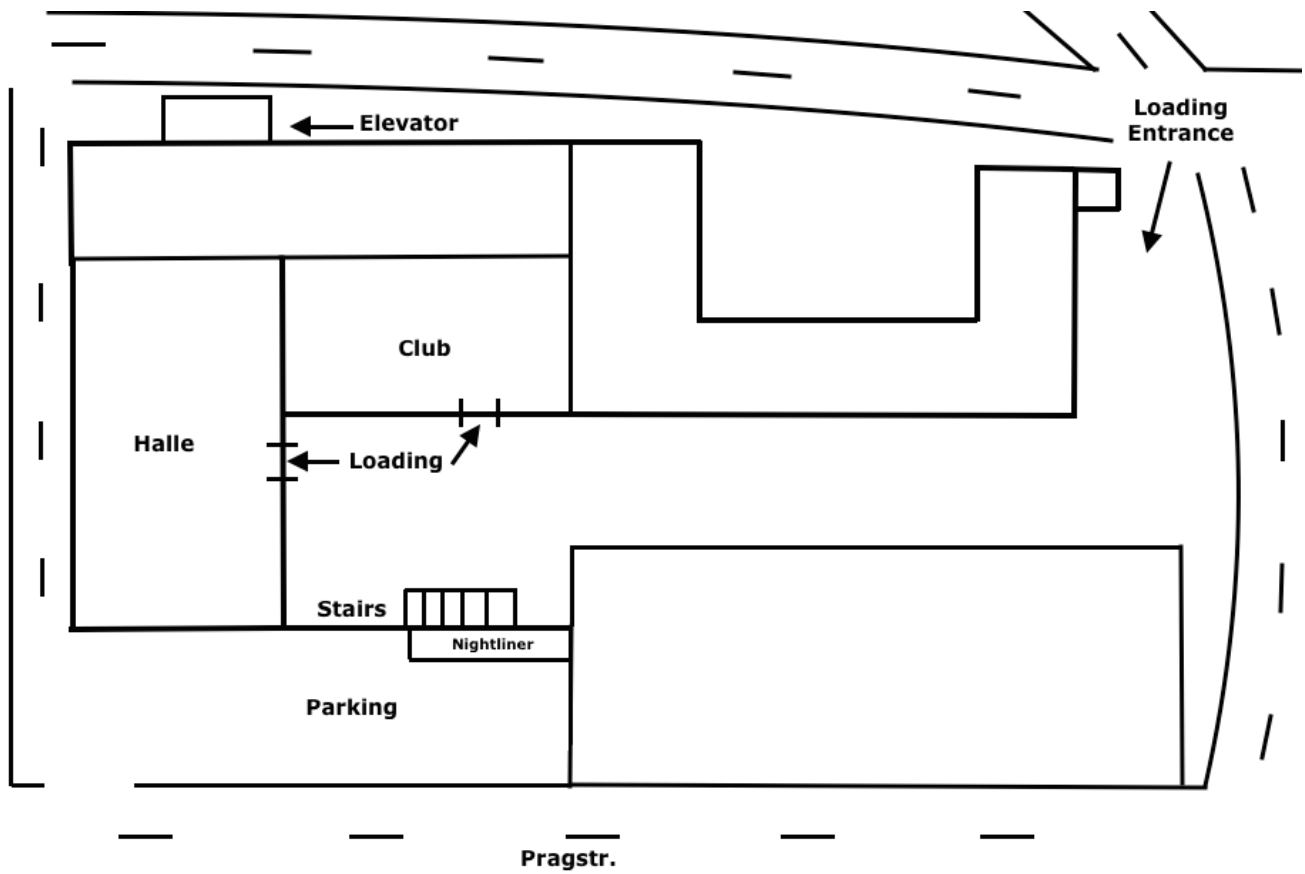


Navigation: Im Wizemann
Quellenstr. 7
70376 Stuttgart

Tel: 0711 84964110
Mail: info@strkultur.de
Web: www.imwizemann.de



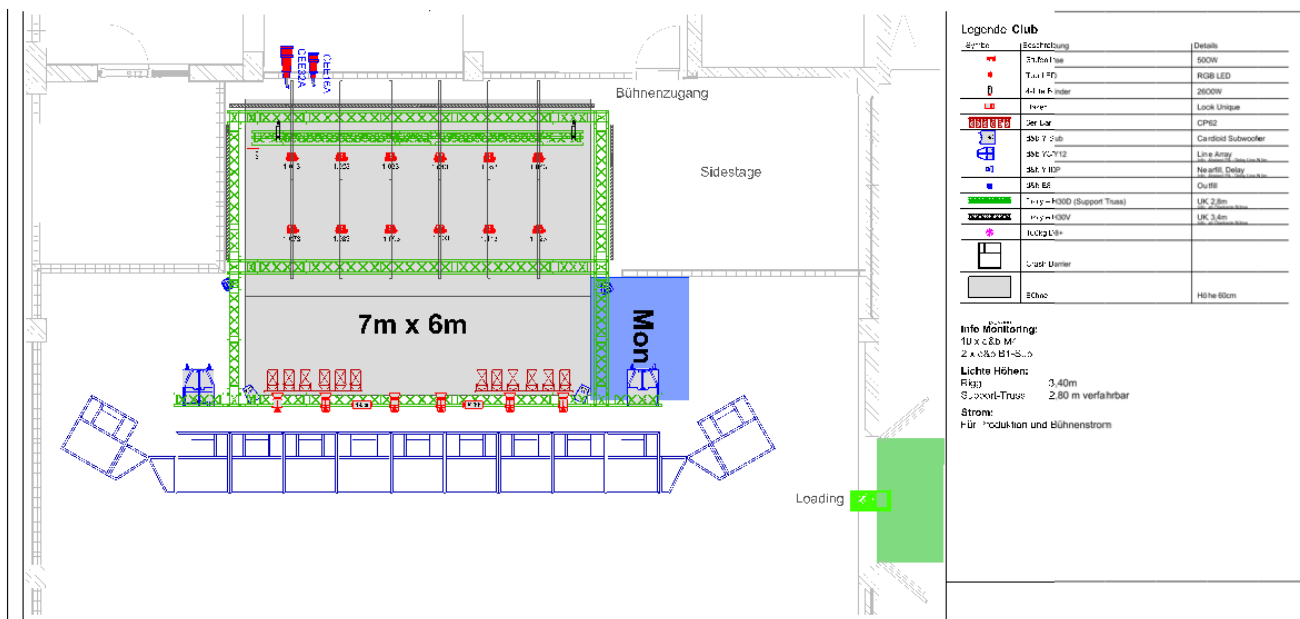
PARKING: Please use our parking lot. AC power available (32A + 16A CEE + Schuko).

LOADING: You can drive with your **CAR/VAN** directly to the venue. 5m to the stage (no stairs).

Please drive with your **NIGHTLINER** forward in the atrium, turn around and drive backward through the atrium. You can uncouple the trailer at the entry from the „Halle“ or the „Club“. After that, please park the nightliner at the parking lot.

Capacity:	550	Backstage:	yes (3)
Kitchen:	yes	Backstage Toilets:	yes
Bus Parking:	yes	Shower:	no
Bus Power:	32A or 2x 16A CEE or Schuko	WiFi:	yes
Merch Fee:	no	Catering:	yes

Stage



Stage:	7m x 6m x 0,8m	Power Stage:	32A, 16A CEE
Clearance:	3,2m	Soundcheck:	5pm (Mo-Fr)
Rigging:	no	FOH:	yes
Pyro:	no	Pedestals:	12/2 (2x1m/2x0,5m)
Side Stage:	yes (stage left only)	Barriers:	yes
Curfew Stage:	11pm		

NO SOUNDCHECK BEFORE 5 PM (MO - FR)

Multicore to FOH

Digital:	8x AES EBU	6x CAT6
Analog:	48 Channel	
Analog & Digital:	5x BNC75ohm	
DMX:	4x DMX (5-pol) → 1x Houselight	

Material list "ImWizemann" Club

No	Manufacturer	Type	Description
Sound			
Main PA			
4	d&b audiotechnik	Y8	80° Line Array System
4	d&b audiotechnik	Y12	120° Line Array System
6	d&b audiotechnik	Y-Sub	
Outfill			
2	d&b audiotechnik	E8	
Infill			
1	d&b audiotechnik	Y10P	110° Fullrange System
Delay			
2	d&b audiotechnik	Y10P	110° Fullrange System
Controler			
3	d&b audiotechnik	D80	4-Channel Amp
Mixingdesk			
1	Yamaha	QL5	32 In/16 Out
1	Yamaha	Rio1608-D	16 In/8 Out
Lighting			
6	Desisti	0,5kW Fresnel	
12	Expolite	TourLED 42CM	
2	Thomas	6er-Bar	CP62, 1kW
2	Thomas	4-Lite Blinder	
1	Look Solutions	Unique 2	
Controler			
1	MA Lighting	Dot2 Core	
1	ETC	Alex M 2,5	
Monitoring			
10	d&b audiotechnik	M4	
2	d&b audiotechnik	B1-Sub	
5	d&b audiotechnik	D12	2-Channel Amp
Mikrophonie			
2	Shure	ULXD4D	UHF TV51-60
4	Shure	ULXD1	Beltpack
4	Shure	ULXD2 Beta87A	Handheld
1	DPA	d:fine	Headset
1	Shure	WL184	Lavalier
2	Shure	Beta52	
1	Shure	Beta91	
6	Audia-Technica	AT4041	
4	Shure	Beta98H/C	
8	Shure	SM58	
6	Shure	SM57	
2	Sennheiser	MD421	
2	Palmer	PLI04	DI-Box
10	BSS	AR133	DI-Box
13	K&M	tall stand	
10	K&M	medium stand	
10	K&M	small stand	
4	K&M	plate large	
Staging			

8	Bütec	Plate 2x1m	
24	Bütec	20cm Legs	
24	Bütec	40cm Legs	
24	Bütec	60cm Legs	
24	Bütec	80cm Legs	
24	Bütec	100cm Legs	
10	Bütec	40cm Rollriser Legs	
8	Bütec	40cm Rollriser double Legs	

DMX-Patch

DMX Patch "ImWizemann" Club

Note: Dot2 Core Console, 4 DMX Universes provided from FoH to Stage



Fixture ID	Channel ID	Manufacturer	Fixture	DMX Patch	Info	Position
	1101	Desisti	0,5kW Fresnel	1.001	2 x 0,5kW Fresnel	Fronttruss
	1102	Desisti	0,5kW Fresnel	1.002	2 x 0,5kW Fresnel	Fronttruss
	1301	Thomas	4-Lite	1.003	1-Channel	Fronttruss
	1103	Desisti	0,5kW Fresnel	1.004	2 x 0,5kW Fresnel	Fronttruss
	1302	Thomas	4-Lite	1.005	1-Channel	Fronttruss
		DIM	empty	1.006		Fronttruss
	1201	Thomas	6-Bar	1.007	1kW CP62	Fronttruss
	1202	Thomas	6-Bar	1.008	1kW CP62	Fronttruss
	1203	Thomas	6-Bar	1.009	1kW CP62	Fronttruss
	1204	Thomas	6-Bar	1.010	1kW CP62	Fronttruss
	1205	Thomas	6-Bar	1.011	1kW CP62	Fronttruss
	1206	Thomas	6-Bar	1.012	1kW CP62	Fronttruss
101		Expolite	TourLED 42	1.013	10-Channel (Tour)	Backtruss
102		Expolite	TourLED 42	1.023	10-Channel (Tour)	Backtruss
103		Expolite	TourLED 42	1.033	10-Channel (Tour)	Backtruss
104		Expolite	TourLED 42	1.043	10-Channel (Tour)	Backtruss
105		Expolite	TourLED 42	1.053	10-Channel (Tour)	Backtruss
106		Expolite	TourLED 42	1.063	10-Channel (Tour)	Backtruss
107		Expolite	TourLED 42	1.073	10-Channel (Tour)	Midtruss
108		Expolite	TourLED 42	1.083	10-Channel (Tour)	Midtruss
109		Expolite	TourLED 42	1.093	10-Channel (Tour)	Midtruss
110		Expolite	TourLED 42	1.103	10-Channel (Tour)	Midtruss
111		Expolite	TourLED 42	1.113	10-Channel (Tour)	Midtruss
112		Expolite	TourLED 42	1.123	10-Channel (Tour)	Midtruss
2001		Look Solutions	Unique	1.501	2-Channel	Stage right

Sound-Limit

Maximaler Innenschalldruck (behördlich in der Baugenehmigung angeordnet!):

Mittelungspegel LAeq = 99dB(A)

Mittelungspegel LCEq = 109 dB(C)

Es läuft eine dauerhafte Protokollierung der Werte. Der LeqA 99db wird über 30min gemessen.

